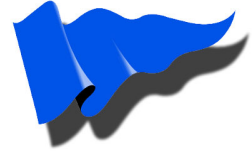


Multilink EDI



SPECCOMM PLUS

FOR WINDOWS

INFORMATION PACK

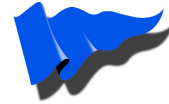


CONTENTS

THE LEADING PROVIDER OF SPEC 2000 SOFTWARE.....	4
OVERVIEW OF SPECCOMM PLUS	5
SPEC 2000 Messages Available for Integration.....	5
Versions of SPECCOMM Plus.....	6
SPECCOMM PLUS - THE CONCEPT.....	7
SPECCOMM Plus software.....	7
Incoming and Outgoing Messages.....	7
1. Direct Transfer into your host application.....	7
2. Creating an ASCII file for your host to pick up and integrate.....	8
BENEFITS OF CHOOSING DIRECT TRANSFER RATHER THAN CREATING AN ASCII FILE... .	9
Using Heterogeneous Queries.....	9
Using ASCII files.....	10
IMPACT ON YOUR HOST COMPUTER.....	11
Programming Requirement by Your Organisation.....	11
Changes to your Host Computer System.....	12
External Access to your Host Application.....	12
Why use a PC?.....	12
HANDLING SMR CHANGES WHEN INTEGRATING SPEC 2000 WITH YOUR HOST APPLICATION.....	13
Handling Trading Partner SMRs.....	14
Insulating your Host Application from Future SMR Changes.....	14
MAKING SPECCOMM PLUS MEET YOUR INDIVIDUAL REQUIREMENTS.....	16
FUNCTIONALITY COMMON TO BOTH DIRECT TRANSFER & ASCII FILE OPTIONS FLEXIBILITY.....	16
Choosing Which Messages to Integrate.....	16
Extended Mapping.....	16
Script Functions.....	16
Defaulted Constant Values.....	17
Batch Mode.....	17
FUNCTIONALITY SPECIFIC TO DIRECT TRANSFER OPTION ONLY.....	17
Heterogeneous SQL file queries.....	17
FUNCTIONALITY SPECIFIC TO ASCII FILE OPTION ONLY.....	17
Special Functions.....	17
File Locking Capabilities.....	17
Configurable Comms Directories and Paths.....	18
Transferring Messages from the PC to your Host.....	18
CONFIGURATING A MESSAGE IN TWO OR THREE EASY STEPS.....	19



Step One - Required Configuration Type.....	19
Direct Database Transfer.....	19
Fixed Length ASCII Files.....	20
Variable Length Delimited ASCII Files.....	21
Step Two - Selecting Global Parameters (ASCII File Configuration Only).....	22
Type of Field Delimiter used.....	22
Insert TEI (Text Element Indicator).	22
Left or Right Justified or Centred.	22
Add user defined user fields.....	22
Blank Padding.....	22
Step Three - Creating a Configuration Screen.....	23
SPECCOMM PLUS MESSAGE ILLUSTRATION.....	24
ILLUSTRATION OF A DIRECT TRANSFER INTO AN ORACLE DATABASE.....	24
Step One - An incoming slash-delimited message as received from the ARINC, SITA or Internet Network.....	24
Step Two - The same message as printed by the Multilink EDI SPEC 2000 software.....	25
Step Three - The chosen SPECCOMM Plus message configuration.....	28
The resulting message configuration.....	28
Step Four – An ‘insert’ SQL Statement.....	29
What’s Next ?.....	29
ILLUSTRATION OF CREATING A FIXED LENGTH ASCII FILE	30
Step One - An incoming slash-delimited message as received from the ARINC/SITA Network.....	30
Step Two - The same message as printed by the Multilink EDI 32bit SPEC 2000 software... ..	31
Step Three - The chosen SPECCOMM Plus message configuration.....	34
The resulting message configuration.....	35
Step Four - The resulting flat ASCII file, ready to be passed to your host application.....	37
What’s Next?.....	37
OTHERS CONSIDERATIONS WHEN INTEGRATING SPEC 2000.....	38
CSC Code.....	38
Rejected Messages.....	38
Conditional Mandatory Fields.....	38
House Keeping on the PC.....	38
File Transfer.....	39
WHAT'S YOUR NEXT STEP?.....	40
Installation, Training & Configuration	40
Upgrading Your Current SPEC 2000 Software.....	40
SUMMARY OF THE BENEFITS OF SPECCOMM PLUS.....	41
WHY CHOOSE MULTILINK EDI FOR SPEC 2000?.....	42



Multilink EDI

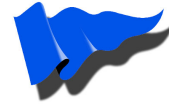
THE LEADING PROVIDER OF SPEC 2000 SOFTWARE

Multilink EDI offers you the widest range of **SPEC 2000** software available. We have a large user base, the majority of which are based in the USA.

Multilink EDI is a software house that specialises in EDI software for the Aviation Industry. As such, we work with the most up to date tools in a fast moving industry. It is important to us to be able to offer our customers current technology that not only meets their current business requirements, but will take them into the future.

As such, we have invested much development to bring you *the best SPEC 2000 product* range – including **SPECCOMM Plus** for Windows. The best host integration product available, it is the best **SPEC 2000** product that enables direct transfer of information into a number of widely used databases.

We have developed our **SPECCOMM Plus** product from the ground up. We have taken all that was good from previous versions, and incorporated these features. What is more, we have listened to our customers' desires and wishes to help them integrate **SPEC 2000** with their host applications and incorporated their good ideas into our software. In all, the new **SPECCOMM Plus** product range minimises implementation time and the required programming expertise, hence reducing the cost of the initial implementation and future systems maintenance.



OVERVIEW OF SPEC COMM PLUS

SPEC COMM Plus is a generic product that has been designed to link **SPEC2000** to the maximum number of different platforms, thus linking either directly into a 3rd party databases such as Oracle; MS SQL, Informix, Sybase, Ingress, DB2, ODBC, Access etc or by creating a flat ASCII file.

SPEC COMM Plus enables the user to customise both the content and the order of message fields to their own preference, so that the main computer system readily accepts and can action files passed to it.

SPEC COMM Plus is designed to give the user a visual picture, of exactly how the chosen **SPEC 2000** message is being reconfigured as each field is changed. As well as this picture, it also gives a true representation of the message content as it will be passed to (or received from) the host.

SPEC 2000 Messages Available for Integration

SPEC COMM Plus enables you to integrate any **SPEC 2000** messages from the following **SPEC 2000** modules:

- **SPEC 2000** Order Administration (chapters 2, 3 & 4)
- **SPEC 2000** Repair Order Administration (chapters 7 & 8)
- **SPEC 2000** Warranty Claim Placement (chapter 14)
- **SPEC 2000** AIRS (chapter 12)
- **SPEC 2000** XML Order Administration (Appendix 10 XML Representations)

That is all the 'S1', 'P1', 'R1', 'W1' and 'A1' messages as well as Freeform and Universal messages.

The New software enables you to choose any combination of **SPEC 2000** modules, and incorporate them into one fully integrated, cohesive package. You can purchase one, two, three or four modules, at increasing rates of discount. If at any time in the future you find you require any additional modules, these can be added to your current system, in a seamless manner.



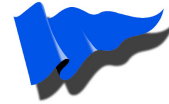
If a single user, or multi user version of **SPEC 2000** is purchased initially, **SPECCOMM Plus** can be added as additional functionality, as and when the user requires.

Versions of SPECCOMM Plus

SPECCOMM Plus can be purchased as either a single user version or a multi user version.

The single user version of **SPECCOMM Plus** is appropriate when, in the short to medium term, all the **SPEC 2000** messages are going to be integrated with the host application.

The multi user LAN version is useful if a number of **SPEC 2000** messages are going to be handled manually by more than one operator and the company runs a PC Network such as Windows NT etc.. This will enable the Gateway PC holding **SPECCOMM Plus** to be left as a communications hub on a daily basis and operators can send and receive messages from their own desks.



SPECCOMM PLUS - THE CONCEPT

SPECCOMM Plus software

All messages are found in one fully integrated software package. **SPECCOMM Plus** is incorporated into the same **SPEC 2000** software package as the message transmission and message translation and validation functionality.

Incoming and Outgoing Messages

The **SPEC 2000** software receives **SPEC 2000** messages from ARINC, SITA or the Internet and validates them.

SPECCOMM Plus can then do one of two things:

1. Direct Transfer into your host application

If your host application uses a compliant database (MS SQL 6.5, Oracle 7, Informix, Sybase, Ingress, DB2, ODBC, Access etc.), **SPECCOMM Plus** can write **SPEC 2000** messages directly to your Database tables.

You can:

Either create a database table specifically for **SPEC 2000** messages. As a second step, you will need to write routines to integrate the data into your software packages.

Alternatively, and where you will gain the greatest advantage, you can integrate **SPEC 2000** messages directly into numerous database tables currently being accessed by your software application. This is called heterogeneous queries. This eliminates the need to write additional programming routines to handle **SPEC 2000** messages. Any 'triggers' currently being used within your system will automatically be applied to **SPEC 2000** messages as well.

SPECCOMM Plus will also read files from your chosen database tables and change them back into **SPEC 2000** format to send across the ARINC/SITA Networks or the Internet.



2. Creating an ASCII file for your host to pick up and integrate

If your host does not use one of the compliant databases, **SPECCOMM Plus** can take a **SPEC 2000** message and map each field into the ASCII format that your main computer system can understand. ASCII files can have either fixed or variable length fields.

It will then deliver the ASCII message into a directory situated either within your main computer system, or on the PC for your main computer system to pick up and use.

You will be required to write programming routines to pick up the ASCII file and integrate it with your software applications in whichever way you feel fit.

You will then need to program your main computer system to drop the responding ASCII file into another directory for **SPECCOMM Plus** to pick up and translate back into **SPEC 2000** format.

SPECCOMM Plus will then pass the message to the **SPEC 2000** software for validation before being sent across the Network to your trading partner.



BENEFITS OF CHOOSING DIRECT TRANSFER RATHER THAN CREATING AN ASCII FILE

Direct transfer has a number of advantages over using ASCII files:

- Direct transfer removes the need to write additional programming routines to integrate the ASCII file - the information is already in a database table and ready to use
- As the information is already in a database table, the amount of expertise required by your programming staff is reduced
- The amount of time needed to integrate **SPEC 2000** is greatly reduced.
- As time and required expertise is reduced, the cost of implementation is also minimised.

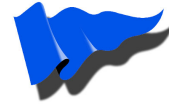
Using Heterogeneous Queries

Taking advantage of this feature will maximise the benefits you can gain from **SPECCOMM Plus**.

Rather than creating one table for each message type within your database and then having to match the information in those tables, to different tables within your host, **SPECCOMM Plus** now enables a message to link directly to a number of existing tables within your database. This is called heterogeneous queries - i.e. queries made against tables in more than one database. A heterogeneous query may join tables on different servers, and even different types of servers. For example, a heterogeneous query might involve a table in an Oracle Database, a table in a Sybase database and a local Dbase table.

The main advantages to you are:

- There no longer needs to be dedicated tables for **SPECCOMM Plus**
- Removes a step in the integration process
- Makes the whole integration much tighter
- Minimises future maintenance



Benefits

- Minimises implementation time
- Reduces required expertise
- Minimises implementation costs
- Minimises future running costs

Using ASCII files

You will need to use the ASCII file option under the following circumstances:

- If you do not use one of the leading databases supported by **SPECCOMM Plus** (MS SQL 6.5, Oracle 7, Informix, Sybase, Ingress, DB2, ODBC, Access etc.)
- If you are replacing a current **SPEC 2000** system, already linked to your host, and want the new implementation to exactly copy your current set up
- If you need to meet a particular set of application specific criteria



IMPACT ON YOUR HOST COMPUTER

SPECCOMM Plus' flexibility ensures the amount of programming required within your main computer system is kept to an absolute minimum. It does this, by creating file formats that are as simple as possible for your main system to interpret.

Programming Requirement by Your Organisation.

SPECCOMM Plus is purely a message handler. It takes a **SPEC 2000** message, reconfigures it to your chosen format and delivers it to your host application. What happens once it arrives within your host application is entirely up to you.

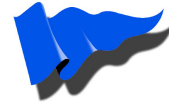
The amount of programming required will differ depending on whether you choose the direct transfer or ASCII file options.

Direct Transfer of **SPEC 2000** messages into your database, using Heterogeneous queries, demands the least amount of programming by your systems experts and minimises the expert system knowledge required.

With ASCII files, there will be a greater amount of programming required within your main computer system to enable your application to pick up the **SPEC 2000** data, and integrate it once it has been delivered by **SPECCOMM Plus**. A thorough knowledge of handling ASCII files and how to integrate them with your host application will be necessary.

Your main computer system will also have to deliver a response ready for **SPECCOMM Plus** to pick up. **SPECCOMM Plus** will then translate the response into a **SPEC 2000** message and send it across the ARINC, SITA or Internet Network.

Some organisations will desire a greater amount of integration than others. Hence, the level of programming required within your host application is dependent on your requirements and can therefore only be determined by you.



Changes to your Host Computer System

As **SPECCOMM Plus** is user-configurable, if your software should change at any time, you can reconfigure **SPECCOMM Plus** without further expenditure to **Multilink EDI**

External Access to your Host Application

There is no risk of anyone from outside your organisation being able to access your main computer system, as **SPECCOMM Plus** merely offers the information to, and takes the information from, your main computer system. It is up to you how your system actually processes messages.

Why use a PC?

SPEC 2000 and **SPECCOMM Plus** need to sit on a Windows PC as the Network connections still require a PC environment to link you to the ARINC, SITA or Internet Networks. Therefore it is more efficient to situate **SPEC 2000** and **SPECCOMM Plus** on the PC as well.



HANDLING SMR CHANGES WHEN INTEGRATING SPEC 2000 WITH YOUR HOST APPLICATION.

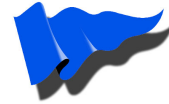
One of the identifying features of the **SPEC 2000** protocol are the SMR (**SPEC 2000** Modification Request) changes that allow the protocol to change and develop as the industry changes and develops. Any **SPEC 2000** user can submit an SMR to the **SPEC 2000** Coordinating Group for consideration. The **SPEC 2000** Coordinating Group meets twice a year and will accept some SMRs and reject others. Then, once a year, the ATA will publish a revised **SPEC 2000** Main Document and Data Dictionary including any new changes to the protocol.

Consequently, although existing users can update their current **SPEC 2000** systems each time a new version of **SPEC 2000** is released, in reality not everyone does. As a result, there are many different versions of **SPEC 2000** in the marketplace being used by many different companies.

It is essential to any company wishing to integrate **SPEC 2000** with their host applications, therefore to:

1. Know which version of **SPEC 2000** their trading partners are using and which specific SMRs they have implemented so the correct style of **SPEC 2000** message can be sent to and received from each trading partner. Failure to do this could result in messages to or from certain trading partners could be rejected from your system.
2. Be able to quickly and easily change a trading partner's SMR set as, when or if a trading partner updates the **SPEC 2000** version they are using.
3. Configure **SPEC 2000** messages being passed to the host to the **SPEC 2000** version most closely resembling in-house systems. This may not necessarily reflect the most up to date version of the **SPEC 2000** protocol.
4. Be able to upgrade your **SPEC 2000** version as and when new SMR changes are introduced with the least possible impact on your host applications. That is, insulate your host application from further programming work when the protocol changes.

SPECCOMM Plus handles SMRs at two levels to ensure that all your trading partner messages can be accepted and received regardless of the version of **SPEC 2000** they are using and to minimise programming requirements on your host by insulating it from future SMR changes.



Handling Trading Partner SMRs

The first level of SMR screening is carried out at the PC before messages are passed to and after messages are passed from **SPECCOMM Plus**.

When setting each trading partner's details (IATA address, Customer/CAGE code, ship to addresses & acceptable message types), you can also specify the version of **SPEC 2000** each trading partner is using, with a default of the most recent **SPEC 2000** version. For example, some companies have chosen to implement just one SMR from a year's SMR set as it specifically applies to their organisation. Therefore, with **Multilink EDI's SPEC 2000** software, each trading partner may have a unique SMR profile.

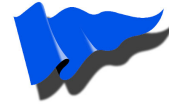
What is more, when a trading partner updates their **SPEC 2000** system, you have the facility to change just one trading partner set up file to ensure you can still send **SPEC 2000** messages that they will accept. You can also choose to "Automatically" adjust your trading partner SMR level if you wish.

Insulating your Host Application from Future SMR Changes

The second level of SMR changes is facilitated within **SPECCOMM Plus** itself.

When configuring each **SPEC 2000** message, you can specify which version of **SPEC 2000**, or which individual SMRs, you wish to comply with. That is, if your in-house system reflects an earlier version of **SPEC 2000**, you can configure **SPECCOMM Plus** to change all incoming **SPEC 2000** messages (whichever version they are) to reflect a specific **SPEC 2000** version. This will help cut down any programming requirement on your host even further (further than the other features already discussed within this document).

Probably the most important feature within **SPECCOMM Plus** is its ability to insulate your host from future SMR changes. As and when new SMRs are accepted, **SPECCOMM Plus** enables you to reconfigure the message configurations so the messages received from and sent to your host remain, in the vast majority of cases, in the same format. This can eliminate any future programming requirements on your host due to changes in the **SPEC 2000** protocol.



There are only two noticeable but rare cases where **SPECCOMM Plus** is unable to insulate your host:

1. Where a new field is introduced into a message and it is categorised as mandatory. This situation is highly unlikely to occur but is a remote possibility.
2. Where a current non-mandatory field is changed to mandatory and it is a field that you currently do not integrate into your host. Again, this is not a common occurrence.

Even then, if this information can be defaulted to a value, then the impact to your host is minimised.



MAKING SPECCOMM PLUS MEET YOUR INDIVIDUAL REQUIREMENTS

FUNCTIONALITY COMMON TO BOTH DIRECT TRANSFER & ASCII FILE OPTIONS FLEXIBILITY

SPECCOMM Plus is designed to be flexible so it can adapt to meet your specific needs. Many of the functional options can be altered in **SPECCOMM Plus** to meet differing requirements.

Choosing Which Messages to Integrate

SPECCOMM Plus allows you to choose which messages you wish to integrate with your main computer system. You can integrate any combination of messages and then, once you are happy with the way they are functioning, integrate further **SPEC 2000** messages. **SPEC 2000** messages can be configured to either integrate on your host application or be handled manually at PC level. This facility allows you to build your integrated system at a speed that suits you – i.e. integrate a message, implement it and then integrate others as and when required.

Extended Mapping

The Configuration screen also facilitates extended mapping.

SPECCOMM Plus includes a feature that allows you to change **SPEC 2000** specified codes to those used within your organisation, before passing the message to your Main Computer System.

For example, if **SPEC 2000** uses GBP as the International Currency Code for Pounds Sterling but your internal system requires UKL, you can configure **SPECCOMM Plus** to change such data before passing the message to your main computer system.

Script Functions

Scripting functions are available at field level to provide powerful options where required. These are more suitable for advanced users working with Multilink on configuration building.



Defaulted Constant Values

If you only supply a constant value for a mandatory field, then the host need not supply it since it can be “defaulted” by **SPECCOMM Plus**.

Batch Mode

SPECCOMM Plus enables Batch Transfer. Messages are passed to your host in batch mode.

FUNCTIONALITY SPECIFIC TO DIRECT TRANSFER OPTION ONLY

Heterogeneous SQL file queries

Direct Transfer facilitates the transfer of information between many different database tables. Queries can be made against tables in more than one database, or may join tables on different servers, and even different types of servers.

FUNCTIONALITY SPECIFIC TO ASCII FILE OPTION ONLY

Routing of ASCII files to different folders depending on message content details:

Special Functions

We have introduced some special functions thus enabling more flexible message handling. These special function keys can be set up to enable additional manipulation of a message.

For example, should your host require the whole **SPEC 2000** message to be incorporated into just one field, or, add additional header information i. e. a field start position and a field end position, timing information, additional date fields etc.

File Locking Capabilities

SPECCOMM Plus can be configured to look for locking/tag fields to ensure that **SPECCOMM Plus** does not pick up semi-populated messages for passing through to **SPEC 2000**. This locking can also be used to stagger the uplifting of files through to your host by stopping processing until the previous file has been removed or a lock file has been updated.



Configurable Comms Directories and Paths

When creating ASCII files, **SPECCOMM Plus** enables the user to configure exactly where that file is to be transferred. Similarly, your Host will send any ASCII files to the PC for **SPECCOMM Plus** to translate into **SPEC 2000** messages, through another configurable directory.

Transferring Messages from the PC to your Host

If you are not using direct database transfer, then in order to transfer messages between the PC and your Main Computer System, you need a piece of file transfer software. For example, the AS400 is usually supplied with PC Support which can be used for this purpose. The choice of file transfer software is up to you. This facility is not included within **SPECCOMM Plus**.



CONFIGURATING A MESSAGE IN TWO OR THREE EASY STEPS

Step One - Required Configuration Type

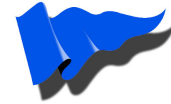
Once you have selected a message, you will be asked to specify which type of configuration type is required.

1. Direct Database transfer
2. Fixed length ASCII files
3. Variable length delimited ASCII files (for example CSV)

Depending on your choice here, you will be faced with three different screen types for configuring your messages.

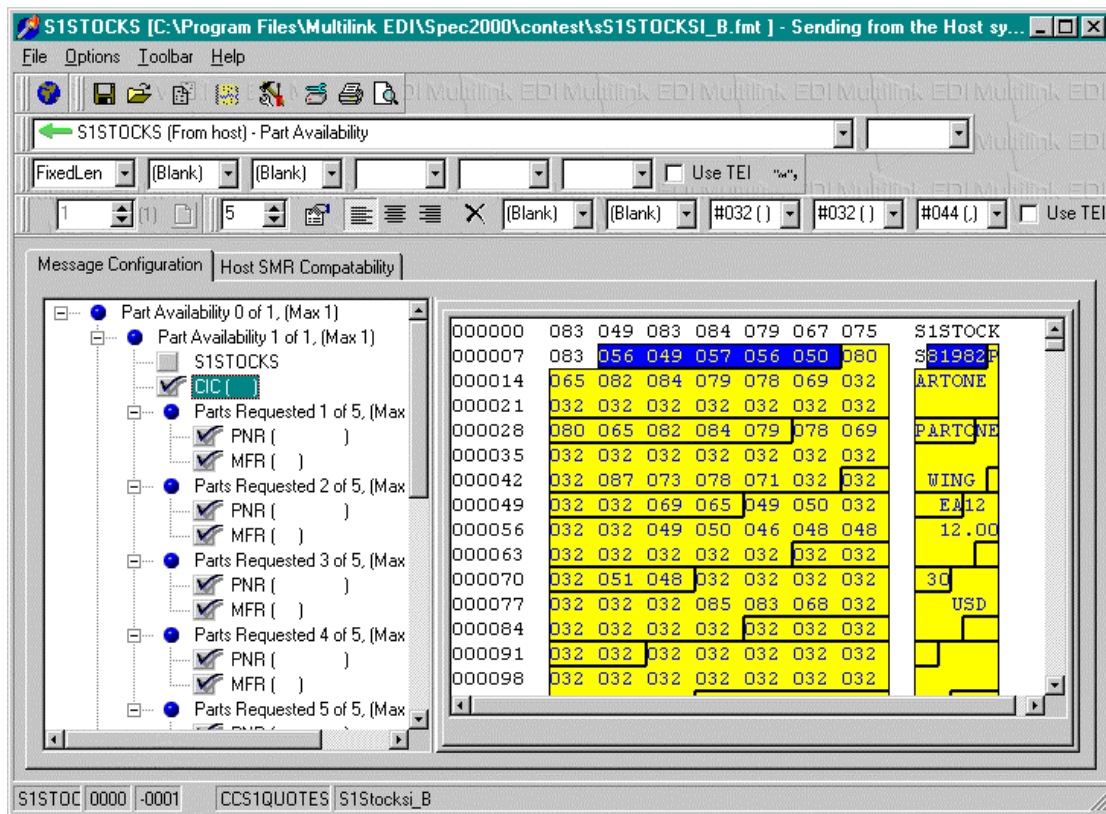
Direct Database Transfer

Alias Field	SPEC-Field	Width	Field Type	DataBase	Table	Table-Field
DEMO_SALES		0	ffloat	Oracle8	DEMO.S	CUSTOMER
DEMO_SALES		0	ffDateTim	Oracle8	DEMO.S	ORDER_DA
DEMO_SALES	CPO	0	ffloat	Oracle8	DEMO.S	ORDER_ID
DEMO_SALES		0	ffDateTim	Oracle8	DEMO.S	SHIP_DATE
DEMO_SALES		0	ffloat	Oracle8	DEMO.S	TOTAL
DEMO_SALES		0	ffloat	Oracle8	DEMO.S	AMOUNT
DEMO_SALES		45	ffString	Oracle8	DEMO.S	CUSTOMER
DEMO_SALES		0	ffloat	Oracle8	DEMO.S	CUSTOMER
DEMO_SALES		30	ffString	Oracle8	DEMO.S	PRODUCT
DEMO_SALES		0	ffloat	Oracle8	DEMO.S	PRODUCT
DEMO_SALES		0	ffloat	Oracle8	DEMO.S	SALESPER
DEMO_PROD		30	ffString	Oracle8	DEMO.F	DESCRIPTI
DEMO_PROD		0	ffloat	Oracle8	DEMO.F	PRODUCT



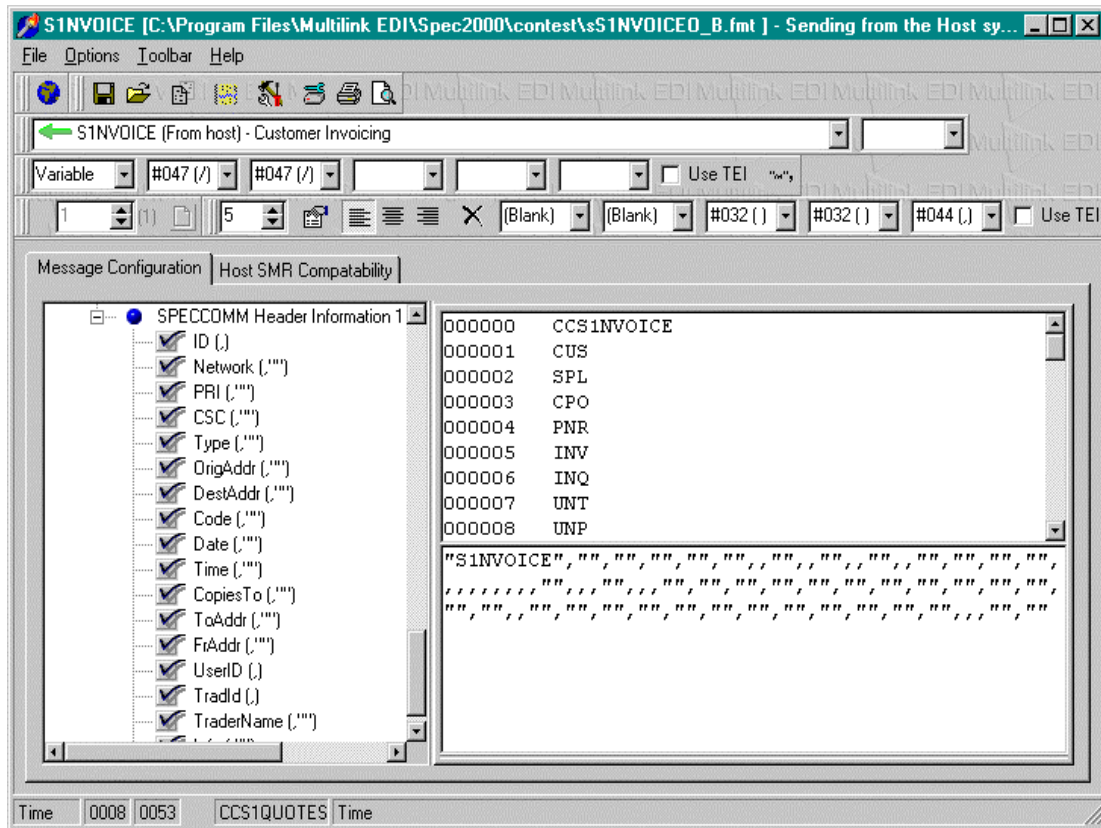
Once you have selected a destination/source tables from your Database(s), it is simply a case of dragging and dropping **SPEC 2000** files into the appropriate fields in the appropriate tables.

Fixed Length ASCII Files



A representation of a flat file is shown on the right above and fields from the **SPEC 2000** message are dragged and dropped into their new position. Blank Padding characters can be added where required. When non-mandatory fields are received empty, empty field blank padding characters can be added or default data can be added to empty fields.

Variable Length Delimited ASCII Files



With variable length files, once you have chosen which delimiter to use, each field from the **SPEC 2000** message is dragged and dropped into the correct field order. **SPECCOMM Plus** also gives the option to add both field delimiters and field content delimiters to 'CSV' files.



Step Two - Selecting Global Parameters (ASCII File Configuration Only)

Step two is only required when creating ASCII files. Those choosing direct database transfer, go straight to Step Three.

Step two is selecting the global parameters that should be attached to all messages:

Each message within **SPEC 2000** can be altered to adhere to the following Global Parameters:

Type of Field Delimiter used.

There is a choice of an unlimited number of different delimiters so you can choose the one used within your own ASCII file format. A blank refers to no delimiter required. Delimiters can either be applicable to the whole message (that is every field in the message) or individual fields.

Insert TEI (Text Element Indicator).

If your ASCII files require Text Element Indicators, **SPECCOMM Plus** gives you the option to add them to the transferred file.

Left or Right Justified or Centred.

You can justify the text within the fields to be either left or right justified or centred.

Add user defined user fields

SPECCOMM Plus has the ability to handle non-**SPEC 2000** fields. That is, fields which have been designed by the User, called "user-fields". These user fields can be utilised for headers or trailers etc.

Blank Padding

You can also set up the character used for:

- Blank padding,
- Empty fields blank padding and (that is when non-mandatory fields are received empty) and
- "Default data for empty fields".



Step Three - Creating a Configuration Screen

Step three is creating a configuration screen for each message type.

You can either choose to integrate a message with your host application or leave it to be handled manually on the PC. Firstly, select a message to be integrated within the configuration screen.

Each screen has three main components; however the third component will differ in structure depending on the type of integration.

1. The Messages Settings at the top of the screen is where you can choose which message to configure and set any Global Parameters
2. The **SPEC 2000** message on the left hand side shows all different fields and depicts them as mandatory, non-mandatory or conditional mandatory and highlights repeating blocks of fields.
3. The mapping area is where **SPEC 2000** fields are dragged and dropped depending on the type of field being created. This area also shows the output file, where applicable.



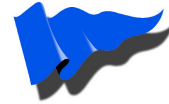
SPECCOMM PLUS MESSAGE ILLUSTRATION

There are four steps from receiving a **SPEC 2000** message from the ARINC, SITA or Internet Networks to passing it to your host application, namely:

ILLUSTRATION OF A DIRECT TRANSFER INTO AN ORACLE DATABASE

Step One - An incoming slash-delimited message as received from the ARINC, SITA or Internet Network

```
QK BSHMLCR
.HDQKZXA 091521
CAM
S1BOOKED/MELUK/MELUK/UKL/3/QTL 6/EVT 15.54/
331/TESTORDER1/PART1/1/EA/1.11/01057
331/TESTORDER2/PART2/2/EA/2.22/02057
331/TESTORDER3/PART3/3/EA/3.33/03057
```



**Step Two - The same message as printed by the Multilink EDI
SPEC 2000 software.**

Multilink EDI Ltd. SPEC2000 32 - Formatted Message Print

(Purchase Order Placement)

Customer Code : MELUK
Supplier Code : MELUK
Inter Currency Code : UKL
Purchase Order Count : 3
Batch No :
Qtl : 6
Ext Value Total : 15.54

(Order Lines)

Order Tran Code : 331 (Order-Normal, New Stock Item, Routine Action)
Customer Ord No : TESTORDER1
Part Number : PART1
Order Qty : 1
Unit Of Measure : EA
Unit Price Amnt : 1.11
Spec Ship Date (DdmmY) : 01057
Spec Ship Methd :
Ship To Code :

Ship to code not on file

Quotation No :
Ship Date Ind :
Manufacturer Code :
Priority Code :
Aircraft Reg No :
Discount Percent :
Packaging Code :
Lease Ind :
Price Break Cnt :
Procurement Disc :
Vat Registration No :

(Remark Line(s))

Remarks Text :

11/24/07 4:39:28 PM

Page 1 of 3



Multilink EDI Ltd. SPEC2000 32 - Formatted Message Print

S1BOOKED - Purchase Order Placement (Continued)

(Order Lines)

Order Tran Code : 331 (Order-Normal, New Stock Item, Routine Action)
Customer Ord No : TESTORDER2
Part Number : PART2
Order Qty : 2
Unit Of Measure : EA
Unit Price Amnt : 2.22
Spec Ship Date (Ddmm) : 02057
Spec Ship Methd :
Ship To Code :

Ship to code not on file

Quotation No :
Ship Date Ind :
Manufacturer Code :
Priority Code :
Aircraft Reg No :
Discount Percent :
Packaging Code :
Lease Ind :
Price Break Cnt :
Procurement Disc :
Vat Registration No :

(Remark Line(s))

Remarks Text :

(Order Lines)

Order Tran Code : 331 (Order-Normal, New Stock Item, Routine Action)

Customer Ord No : TESTORDER3
Part Number : PART3
Order Qty : 3
Unit Of Measure : EA
Unit Price Amnt : 3.33
Spec Ship Date (Ddmm) : 03057
Spec Ship Methd :
Ship To Code :

Ship to code not on file



Multilink EDI Ltd. SPEC2000 32 - Formatted Message Print

S1BOOKED - Purchase Order Placement (Continued)

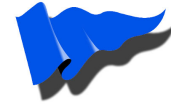
Quotation No :
Ship Date Ind :
Manufacturer Code :
Priority Code :
Aircraft Reg No :
Discount Percent :
Packaging Code :
Lease Ind :
Price Break Cnt :
Procurement Disc :
Vat Registration No :

(Remark Line(s))
Remarks Text :

Transport Network :
Priority :
Address :
Code :
Communications Service Code :
To Address :
From Address :

11/24/07 4:39:29 PM

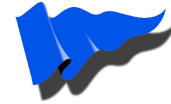
Page 3 of 3



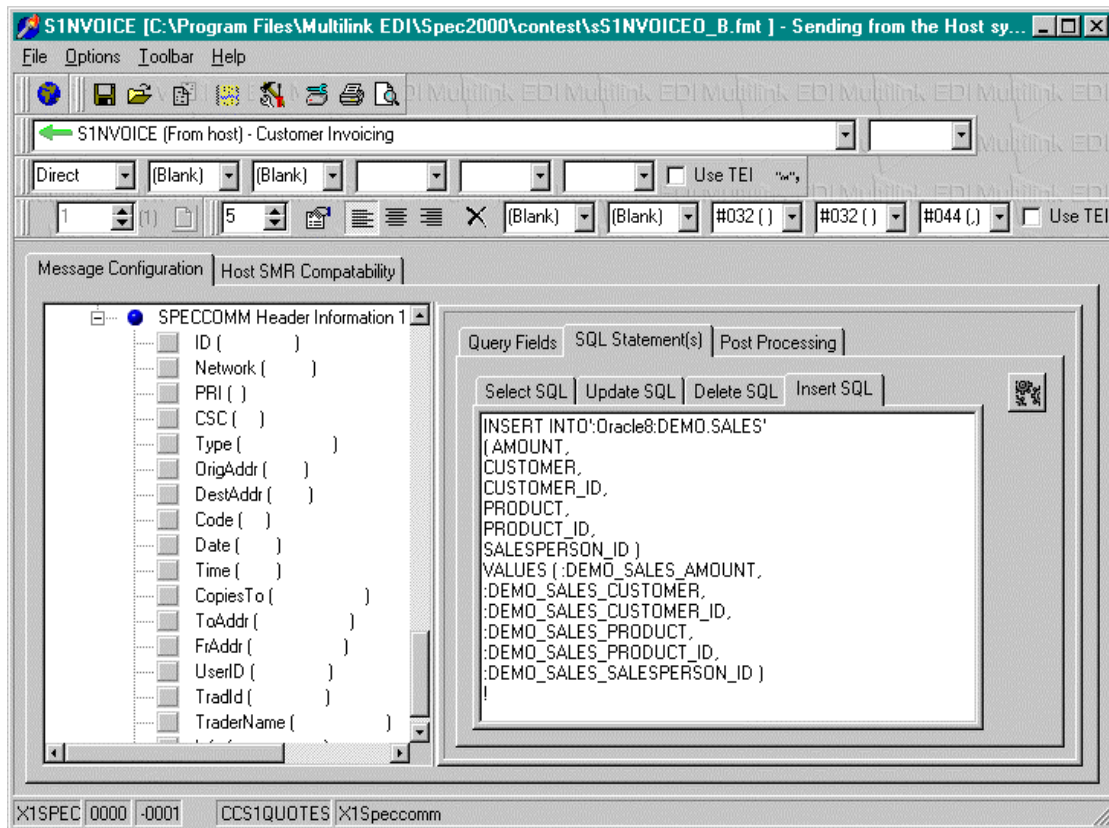
Step Three - The chosen SPECCOMM Plus message configuration

The resulting message configuration

Alias Field	SPEC-Field	Width	Field Type	DataBase	Table	Table-Field
S1BOOKEDIO	BND	2	ftString	MS Acce	S1BOOK	BKBND
S1BOOKEDIO	CIC	5	ftString	MS Acce	S1BOOK	BKCIC
S1BOOKEDIO	EVT	13	ftString	MS Acce	S1BOOK	BKEVT
S1BOOKEDIO	ICR	3	ftString	MS Acce	S1BOOK	BKICR
S1BOOKEDIO	POC	2	ftString	MS Acce	S1BOOK	BKPOC
S1BOOKEDIO	QTL	7	ftString	MS Acce	S1BOOK	BKQTL
S1BOOKEDIO	Parent	0	ftInteger	MS Acce	S1BOOK	BKRECIC
S1BOOKEDIO	SPL	5	ftString	MS Acce	S1BOOK	BKSPL
S1BOOKEDIO	Code	5	ftString	MS Acce	S1BOOK	MSGCOC
S1BOOKEDIO	CopiesTo	64	ftString	MS Acce	S1BOOK	MSGCOF
S1BOOKEDIO	CSC	5	ftString	MS Acce	S1BOOK	MSGCSC
S1BOOKEDIO	DestAddr	8	ftString	MS Acce	S1BOOK	MSGDES



Step Four – An ‘insert’ SQL Statement



What's Next ?

The data is already in the database tables so all that is needed is for you to decide how to process that data. In many cases, these processes are already in place.

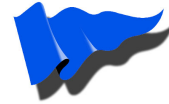


ILLUSTRATION OF CREATING A FIXED LENGTH ASCII FILE

These steps are illustrated below for an S1BOOKED message (an incoming purchase order), ordering three different parts.

Step One - An incoming slash-delimited message as received from the ARINC/SITA Network

```
QK BSHMLCR
.HDQKZXA 091521
CAM
S1BOOKED/MELUK/MELUK/UKL/3/QTL 6/EVT 15.54/
331/TESTORDER1/PART1/1/EA/1.11/01057
331/TESTORDER2/PART2/2/EA/2.22/02057
331/TESTORDER3/PART3/3/EA/3.33/03057
```



Step Two - The same message as printed by the Multilink EDI 32bit SPEC 2000 software.

Multilink EDI Ltd. SPEC2000 32 - Formatted Message Print

(Purchase Order Placement)

Customer Code : MELUK
 Supplier Code : MELUK
 Inter Currency Code : UKL
 Purchase Order Count : 3
 Batch No :
 Qtl : 6
 Ext Value Total : 15.54

(Order Lines)

Order Tran Code : 331 (Order-Normal, New Stock Item, Routine Action)
 Customer Ord No : TESTORDER1
 Part Number : PART1
 Order Qty : 1
 Unit Of Measure : EA
 Unit Price Amnt : 1.11
 Spec Ship Date (DdmmY) : 01057
 Spec Ship Methd :
 Ship To Code :

Ship to code not on file

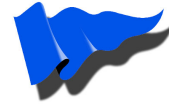
Quotation No :
 Ship Date Ind :
 Manufacturer Code :
 Priority Code :
 Aircraft Reg No :
 Discount Percent :
 Packaging Code :
 Lease Ind :
 Price Break Cnt :
 Procurement Disc :
 Vat Registration No :

(Remark Line(s))

Remarks Text :

11/24/07 4:39:28 PM

Page 1 of 3



Multilink EDI Ltd. SPEC2000 32 - Formatted Message Print

S1BOOKED - Purchase Order Placement (Continued)

(Order Lines)

Order Tran Code : 331 (Order-Normal, New Stock Item, Routine Action)
Customer Ord No : TESTORDER2
Part Number : PART2
Order Qty : 2
Unit Of Measure : EA
Unit Price Amnt : 2.22
Spec Ship Date (DdmmY) : 02057
Spec Ship Methd :
Ship To Code :

Ship to code not on file

Quotation No :
Ship Date Ind :
Manufacturer Code :
Priority Code :
Aircraft Reg No :
Discount Percent :
Packaging Code :
Lease Ind :
Price Break Cnt :
Procurement Disc :
Vat Registration No :

(Remark Line(s))

Remarks Text :

(Order Lines)

Order Tran Code : 331 (Order-Normal, New Stock Item, Routine Action)

Customer Ord No : TESTORDER3
Part Number : PART3
Order Qty : 3
Unit Of Measure : EA
Unit Price Amnt : 3.33
Spec Ship Date (DdmmY) : 03057
Spec Ship Methd :
Ship To Code :

Ship to code not on file

11/24/07 4:39:28 PM

Page 2 of 3



Multilink EDI Ltd. SPEC2000 32 - Formatted Message Print

S1BOOKED - Purchase Order Placement (Continued)

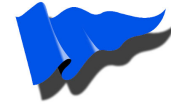
Quotation No :
Ship Date Ind :
Manufacturer Code :
Priority Code :
Aircraft Reg No :
Discount Percent :
Packaging Code :
Lease Ind :
Price Break Cnt :
Procurement Disc :
Vat Registration No :

(Remark Line(s))
Remarks Text :

Transport Network :
Priority :
Address :
Code :
Communications Service Code :
To Address :
From Address :

11/24/07 4:39:29 PM

Page 3 of 3



Step Three - The chosen SPECCOMM Plus message configuration

The screenshot shows the 'S1BOOKED' application window with the following configuration details:

- Title Bar:** S1BOOKED [c:\formats\sprS1BOOKEDI_B.fmt] - Receiving to the Host system
- Menu Bar:** File Options Toolbar Help
- Toolbar:** Includes icons for file operations and a 'Send/Receive' toggle set to 'Receive'.
- Configuration Fields:**
 - FixedLen: (Blank)
 - Field 1: (Blank)
 - Field 2: (Blank)
 - Field 3: #032 ()
 - Field 4: #032 ()
 - Field 5: (Blank)
- Line Count:** 4 (10)
- Second Configuration Row:**
 - Field 1: 3
 - Field 2: (Blank)
 - Field 3: (Blank)
 - Field 4: #032 ()
 - Field 5: #032 ()
 - Field 6: (Blank)
- Tree View (Left):**
 - Purchase Order Placement
 - S1BOOKED
 - CIC ()
 - SPL ()
 - ICR ()
 - POC ()
 - BNO ()
 - QTL ()
 - EVT ()
 - Order Lines 10
 - TNC ()
 - CPO ()
 - PNR (TNC ())
 - QTO ()
 - UNT ()
 - UNP ()
 - SSD ()
 - SSM ()

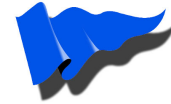
- Main Data Table:**

000000	032	032	032	032	032	032	032
000007	032	032	032	032	032	032	032
000014	032	032	032	032	032	032	032
000021	032	032	032	032	032	032	032
000028	032	032	032	032	032	032	032
000035	032	032	032	032	032	032	032
000042	032	032	032	032	032	032	032
000049	032	032	032	032	032	032	032
000056	032	032	032	032	032	032	032
000063	032	032	032	032	032	032	032
000070	032	032	032	032	032	032	032
000077	032	032	032	032	032	032	032
000084	032	032	032	032	032	032	032
000091	032	032	032	032	032	032	032
000098	032	032	032	032	032	032	032
000105	032	032	032	032	032	032	032
- Status Bar:** TNC 0003 0086 REM :0203 Order Tran Code



The resulting message configuration

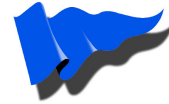
SPECOMM Plus message configuration												Multilink		
S1BOOKED To Supplier												Receiving to the Host system		
Fixed Length Fields														
Start Position	End Position	Field Name	Width	Justification	Format	Uses TEI	Start Delimiter	End Delimiter	Empty Character	Fill Character	Field Separator	Default Data		
000000	000008	ADR	000008	Left	(None)	(No)	(None)	(None)	#032()	#032()	(None)			
000008	000009	PRI	000001	Left	(None)	(No)	(None)	(None)	#032()	#032()	(None)			
000009	000014	CSC	000005	Left	(None)	(No)	(None)	(None)	#032()	#032()	(None)			
000014	000034	TOA	000020	Left	(None)	(No)	(None)	(None)	#032()	#032()	(None)			
000034	000054	FRA	000020	Left	(None)	(No)	(None)	(None)	#032()	#032()	(None)			
000054	000059	CIC	000005	Left	(None)	(No)	(None)	(None)	#032()	#032()	(None)			
000059	000064	SPL	000005	Left	(None)	(No)	(None)	(None)	#032()	#032()	(None)			
000064	000067	ICR	000003	Left	(None)	(No)	(None)	(None)	#032()	#032()	(None)			
000067	000069	POC	000002	Left	(None)	(No)	(None)	(None)	#032()	#032()	(None)			
000069	000071	BNO	000002	Left	(None)	(No)	(None)	(None)	#032()	#032()	(None)			
000071	000078	QTL	000007	Left	(None)	(No)	(None)	(None)	#032()	#032()	(None)			
000078	000091	EYT	000013	Left	(None)	(No)	(None)	(None)	#032()	#032()	(None)			
000091	000094	TNC	000003	Left	(None)	(No)	(None)	(None)	#032()	#032()	(None)			
000094	000105	CP O	000011	Left	(None)	(No)	(None)	(None)	#032()	#032()	(None)			
000105	000120	PNR	000015	Left	(None)	(No)	(None)	(None)	#032()	#032()	(None)			
000120	000125	QTO	000005	Left	(None)	(No)	(None)	(None)	#032()	#032()	(None)			
000125	000127	UNT	000002	Left	(None)	(No)	(None)	(None)	#032()	#032()	(None)			
000127	000140	UNP	000013	Left	(None)	(No)	(None)	(None)	#032()	#032()	(None)			
000140	000145	SSD	000005	Left	DDMMYY	(No)	(None)	(None)	#032()	#032()	(None)			
000145	000148	SSM	000003	Left	(None)	(No)	(None)	(None)	#032()	#032()	(None)			
000148	000153	SHT	000005	Left	(None)	(No)	(None)	(None)	#032()	#032()	(None)			
000153	000168	QTN	000015	Left	(None)	(No)	(None)	(None)	#032()	#032()	(None)			
000168	000169	SDC	000001	Left	(None)	(No)	(None)	(None)	#032()	#032()	(None)			
000169	000174	MFR	000005	Left	(None)	(No)	(None)	(None)	#032()	#032()	(None)			
000174	000177	PRI	000003	Left	(None)	(No)	(None)	(None)	#032()	#032()	(None)			
000177	000182	ACN	000005	Left	(None)	(No)	(None)	(None)	#032()	#032()	(None)			
000182	000184	DIS	000002	Left	(None)	(No)	(None)	(None)	#032()	#032()	(None)			
000184	000185	PKG	000001	Left	(None)	(No)	(None)	(None)	#032()	#032()	(None)			
000185	000186	LSE	000001	Left	(None)	(No)	(None)	(None)	#032()	#032()	(None)			
000186	000187	PBR	000001	Left	(None)	(No)	(None)	(None)	#032()	#032()	(None)			
000187	000192	PDP	000005	Left	(None)	(No)	(None)	(None)	#032()	#032()	(None)			
000192	000208	VRN	000016	Left	(None)	(No)	(None)	(None)	#032()	#032()	(None)			
000208	000272	REM	000064	Left	(None)	(No)	(None)	(None)	#032()	#032()	(None)			
000272	000275	TNC	000003	Left	(None)	(No)	(None)	(None)	#032()	#032()	(None)			



SPECCOMM Plus message configuration



Start Position	End Position	Field Name	Width	Justification	Format	Uses	Start Delimiter	End Delimiter	Empty Character	Fill Character	Field Separator	Default Data
000275	000286	CPO	000011	Left	(None)	(No)	(None)	(None)	#032	#032	(None)	(None)
000286	000301	PNR	000015	Left	(None)	(No)	(None)	(None)	#032	#032	(None)	(None)
000301	000306	GTO	000005	Left	(None)	(No)	(None)	(None)	#032	#032	(None)	(None)
000306	000308	UNT	000002	Left	(None)	(No)	(None)	(None)	#032	#032	(None)	(None)
000308	000321	UNP	000013	Left	(None)	(No)	(None)	(None)	#032	#032	(None)	(None)
000321	000326	SSD	000005	Left	DDMMYY	(No)	(None)	(None)	#032	#032	(None)	(None)
000326	000329	SSM	000003	Left	(None)	(No)	(None)	(None)	#032	#032	(None)	(None)
000329	000334	SHT	000005	Left	(None)	(No)	(None)	(None)	#032	#032	(None)	(None)
000334	000349	QTN	000015	Left	(None)	(No)	(None)	(None)	#032	#032	(None)	(None)
000349	000350	SDC	000001	Left	(None)	(No)	(None)	(None)	#032	#032	(None)	(None)
000350	000355	MFR	000005	Left	(None)	(No)	(None)	(None)	#032	#032	(None)	(None)
000355	000358	PRI	000003	Left	(None)	(No)	(None)	(None)	#032	#032	(None)	(None)
000358	000363	ACN	000005	Left	(None)	(No)	(None)	(None)	#032	#032	(None)	(None)
000363	000365	DIS	000002	Left	(None)	(No)	(None)	(None)	#032	#032	(None)	(None)
000365	000366	PKG	000001	Left	(None)	(No)	(None)	(None)	#032	#032	(None)	(None)
000366	000367	LSE	000001	Left	(None)	(No)	(None)	(None)	#032	#032	(None)	(None)
000367	000368	PBR	000001	Left	(None)	(No)	(None)	(None)	#032	#032	(None)	(None)
000368	000373	PDP	000005	Left	(None)	(No)	(None)	(None)	#032	#032	(None)	(None)
000373	000389	YRN	000016	Left	(None)	(No)	(None)	(None)	#032	#032	(None)	(None)
000389	000453	REM	000064	Left	(None)	(No)	(None)	(None)	#032	#032	(None)	(None)
000453	000456	TNC	000003	Left	(None)	(No)	(None)	(None)	#032	#032	(None)	(None)
000456	000467	CPO	000011	Left	(None)	(No)	(None)	(None)	#032	#032	(None)	(None)
000467	000482	PNR	000015	Left	(None)	(No)	(None)	(None)	#032	#032	(None)	(None)
000482	000487	QTO	000005	Left	(None)	(No)	(None)	(None)	#032	#032	(None)	(None)
000487	000489	UNT	000002	Left	(None)	(No)	(None)	(None)	#032	#032	(None)	(None)
000489	000502	UNP	000013	Left	(None)	(No)	(None)	(None)	#032	#032	(None)	(None)
000502	000507	SSD	000005	Left	DDMMYY	(No)	(None)	(None)	#032	#032	(None)	(None)
000507	000510	SSM	000003	Left	(None)	(No)	(None)	(None)	#032	#032	(None)	(None)
000510	000515	SHT	000005	Left	(None)	(No)	(None)	(None)	#032	#032	(None)	(None)
000515	000530	QTN	000015	Left	(None)	(No)	(None)	(None)	#032	#032	(None)	(None)
000530	000531	SDC	000001	Left	(None)	(No)	(None)	(None)	#032	#032	(None)	(None)
000531	000536	MFR	000005	Left	(None)	(No)	(None)	(None)	#032	#032	(None)	(None)
000536	000539	PRI	000003	Left	(None)	(No)	(None)	(None)	#032	#032	(None)	(None)
000539	000544	ACN	000005	Left	(None)	(No)	(None)	(None)	#032	#032	(None)	(None)
000544	000546	DIS	000002	Left	(None)	(No)	(None)	(None)	#032	#032	(None)	(None)
000546	000547	PKG	000001	Left	(None)	(No)	(None)	(None)	#032	#032	(None)	(None)
000547	000548	LSE	000001	Left	(None)	(No)	(None)	(None)	#032	#032	(None)	(None)
000548	000549	PBR	000001	Left	(None)	(No)	(None)	(None)	#032	#032	(None)	(None)
000549	000554	PDP	000005	Left	(None)	(No)	(None)	(None)	#032	#032	(None)	(None)



SPECCOMM Plus message configuration

Start Position	End Position	Field Name	Width	Justification	Format	Uses TEI	Start Delimiter	End Delimiter	Empty Character	Fill Character	Field Separator	Default Data
000554	000570	VRN	000016	Left	(None)	(No)	(None)	(None)	#032()	#032()	(None)	
000570	000634	REM	000064	Left	(None)	(No)	(None)	(None)	#032()	#032()	(None)	
(Not Used)	(Not Used)	CCS1BOOKED	000008	Left	(None)	(No)	(None)	(None)	#032()	#032()	(None)	S1BOOKED
(Not Used)	(Not Used)	ZOCOPY	000008	Left	(None)	(No)	(None)	(None)	#032()	#032()	(None)	CPY
(Not Used)	(Not Used)	COD	000005	Left	(None)	(No)	(None)	(None)	#032()	#032()	(None)	

25/11/97 18:11:05 Multilink EDI Ltd. Page No.: 3

Step Four - The resulting flat ASCII file, ready to be passed to your host application

```

HDQKZXA MNONE                MELUKMELUKUKL3      6      15.54
331TESTORDER1 PART1          1      EA1.11      01057
331TESTORDER1 PART2          2      EA2.22      02057
331TESTORDER1 PART3          3      EA3.33      03057
    
```

What's Next?

Once this ASCII file is passed to your host computer, your Systems Expert will be required to write a program to take information in the ASCII file and integrate it with your software programs running on your host.



OTHERS CONSIDERATIONS WHEN INTEGRATING SPEC 2000

When integrating **SPEC 2000**, there are other areas to consider, due to the way **SPEC 2000** functions. Please find below the more common areas of discussion that you will need to think about.

CSC Code

The Communications Service Code (CSC), an integral part of every **SPEC 2000** message, specifies whether a message is a Duplicate message or a Correction of a previously sent message or a message that is being sent for the first time.

When implementing **SPECCOMM Plus**, you need to consider how to handle and the significance of messages from each category within the CSC Code.

Rejected Messages

If the **SPEC 2000** software rejects an incoming or outgoing message as incompatible with the defined **SPEC 2000** protocol, it will automatically create an S1REJECT message. You need to consider what to do with the rejected messages and how to monitor their handling.

Conditional Mandatory Fields

Within certain **SPEC 2000** messages, there are conditional mandatory fields. That is, non-mandatory fields which become mandatory when certain information is entered into other fields. You need to be aware of all the conditional mandatory fields and consider how to handle them when integrating.

House Keeping on the PC

When choosing which messages to integrate, if you decide to keep any of the messages as 'LOCAL' messages will be kept on the PC. You will therefore have to consider a routine to back up the Message Database on the PC periodically so the PC Disc Storage does not get full. If the Disc should fill completely, **SPECCOMM Plus** and **SPEC 2000** will not operate.



If you decide, however, that all the messages are 'REMOTE', the PC can act as a true black box and will require no regular house keeping.

Similar consideration needs to be applied to Message Logs (which will always grow) if they are located on the PC.

File Transfer

As the file transfer is initiated by **SPECCOMM Plus**, you need to consider how your Host will initiate a file transfer if only Outgoing Messages are ready to be sent.

Please note: this list is not exhaustive. As and when further discussion points are raised by companies implementing **SPECCOMM Plus**, they will be added to this list.



WHAT'S YOUR NEXT STEP?

This Information Pack has tried to be comprehensive in its presentation of **SPECCOMM Plus**. However, I am sure it has raised questions associated with your particular circumstances. If this is the case, please do not hesitate to call us to discuss your individual requirements and our Technical Sales Representative will be happy to go through any issues. Our phone number is +44 (0)1903 821554.

Installation, Training & Configuration

Multilink EDI offers, Online Training and Configuration Service for **SPECCOMM Plus**. This includes installing the **SPEC 2000** and **SPECCOMM Plus** software on your PC, training your users how to use it and, if required, configuring the **SPECCOMM Plus** screens to create the direct database transfer or ASCII files of your choice. Above and beyond this, you will be required to complete an amount of programming on your Host application to accept and integrate the **SPEC 2000** data files.

However, **SPECCOMM Plus** is user-configurable and we have spent a lot of time designing the product to be easy to use. We therefore, recommend that you initially try to implement **SPECCOMM Plus** using your in-house computer expertise. If you find you would like a member of the **Multilink EDI** Technical Team to assist, however, we would be delighted to discuss your exact requirements and prepare a quotation for the work.

Upgrading Your Current SPEC 2000 Software

If you have already purchased **Multilink EDI**'s single user, multi user or client/server version of **SPEC 2000**, you can upgrade your software to **SPECCOMM Plus** by only paying the difference in the two net prices.

Once you have placed an order, we will upgrade your current software to add the **SPECCOMM Plus** capability.



SUMMARY OF THE BENEFITS OF SPECCOMM PLUS

1. ***SPECCOMM Plus*** is the best User-Configurable Main Application Link available
2. ***SPECCOMM Plus*** is the best main application link enabling direct file transfer into a number of leading databases
3. ***SPECCOMM Plus*** is the best main application link enabling heterogeneous queries
4. ***SPECCOMM Plus*** minimises the Impact on your Main Computer System
5. ***SPECCOMM Plus*** minimises implementation time
6. ***SPECCOMM Plus*** reduces the systems expertise needed to integrate **SPEC 2000**
7. ***SPECCOMM Plus*** minimises future systems maintenance
8. ***SPECCOMM Plus*** ensures you Maintain Control of your In-House systems
9. ***SPECCOMM Plus*** gives you the Power to Design a system to meet your Individual Requirements
10. ***SPECCOMM Plus*** enables you to Build your system at a Speed that Suits You



WHY CHOOSE MULTILINK EDI FOR SPEC 2000?

1. **Multilink EDI** is the Leading Provider of **SPEC 2000** Software
2. **Multilink EDI** is the best **SPEC 2000** software vendor offering a full range of Windows **SPEC 2000** products
3. **Multilink EDI** is an original ATA **SPEC 2000** Support Agency and, as such, works closely with the ATA to keep our software up to date with the latest SMR changes
4. **Multilink EDI** 's main business is **SPEC 2000** and dedicates more experts to **SPEC 2000** than any other software provider
5. **Multilink EDI** has a dedicated **SPEC 2000** Support Department with the ability to give you first class **SPEC 2000** support
6. **Multilink EDI** offers the complete range of **SPEC 2000** software, compatible with any Main Computer System that can read an ASCII File
7. **Multilink EDI** has the reputation for being your safest and most reliable source for **SPEC 2000** software



Please phone our Technical Sales Department on

+44 (0) 1903 821 554

or email us on

sales@spec2k.com

for further information.



We look forward to hearing from you.

**Multilink EDI
SPECCOMM Plus
Information Pack**

www.spec2k.com